



QUICKSTART GUIDE

Patch Management & Vulnerability Assessment

Learn how to *quickly* configure the **automation of both Microsoft and third party update patching** using the Kaspersky Security Center.

This is a *QuickStart* guide of this process.

For more in-depth information, please refer to the official Kaspersky Security Center documentation

STEP 1

Prerequisites

- Install the Kaspersky Security Center
- Activate a Select, Advanced or Total license key for the Kaspersky Security Center
- Install and run the Kaspersky Network Agent and Kaspersky Endpoint Security software on the targeted client workstations.

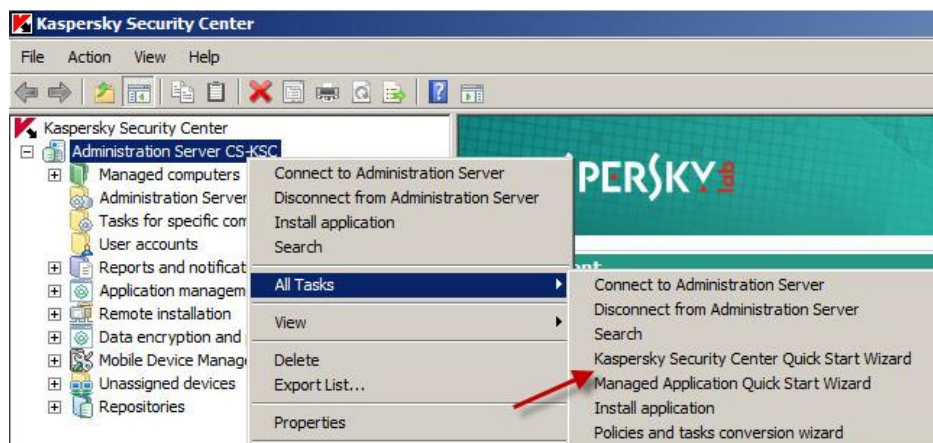
If you have any questions on these processes, please refer to the Kaspersky Lab Initial Setup Quickstart Guide.

STEP 2

Implementation

Detecting Vulnerabilities and availability of Updates in your Environment

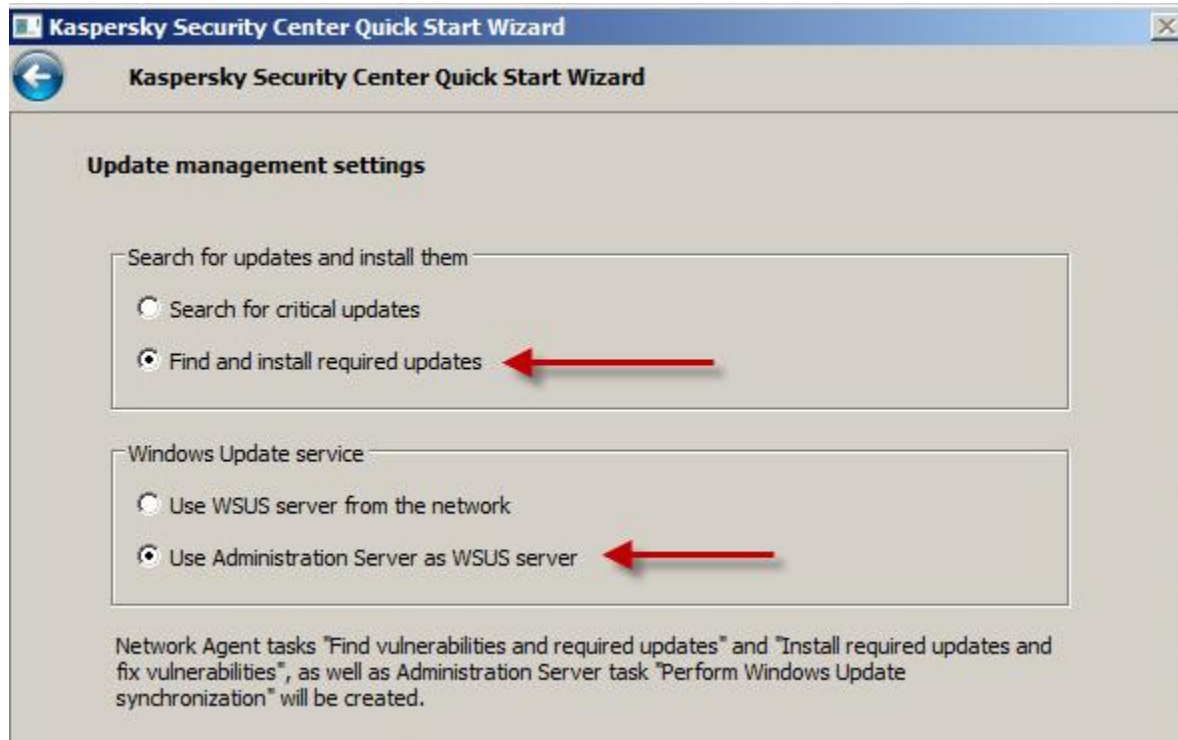
Run the **QuickStart Wizard** by right clicking on **Administration Server > All Tasks > Kaspersky Security Center Quick Start Wizard**



Continue through the wizard until you reach the **Update management settings** screen.

By selecting **Find and install required updates** the wizard will build a customizable task to scan for and install applicable updates to the workstations in your environment.

By selecting **Use Administration Server as WSUS server**, this causes the wizard to build tasks for determining what patches are available for your machines, and a task specifically for installing Windows updates.



Continue through the remainder of the wizard.

Customization of settings

With the wizard complete, check to ensure that the **Find vulnerabilities and required updates** task has been created in the **Managed computers** group.

Be sure to click on the **Tasks** tab to view the list of tasks!



The Find vulnerabilities and required updates task polls your workstations on a schedule to determine if new updates are available given the software that has been installed on them.

The Install required updates and fix vulnerabilities task does the actual work of installing valid updates to your workstations






The default settings work fine, however for best performance, it is recommended that you open the properties of the task by double clicking on it, and modifying the Settings to meet your use case.

- Sections
- General
- Notification
- Schedule
- Settings
- Test installation
- OS restart
- Exclusions from task scope

Settings

Specify rules for update installation:

Rule name
 Approved updates
 Fixes for critical vulnerabilities
 Microsoft updates: critical updates, security updates and definition updates

- Start installation at computer restart or shutdown
- Install required general system components (prerequisites).
- Allow installation of new application versions during updates

Patch Management at Scale

You can view all of the applicable patches and updates at once by expanding the Application Management node in the left hand navigation pane and clicking on Software Updates

Getting started > Application management > Software updates

Software updates

The list presents detailed information about updates published on Microsoft update servers for applications installed on managed computers.

- Configure Windows Update synchronization**
Administration Server can be used as an update server for Windows Updates (WSUS). In this case, Administration Server synchronizes data on updates with Windows Update Center with the specified frequency and deploys updates centrally to Windows Update services on client computers.
- Configure search of required updates**
The task searches for vulnerabilities in software installed on the client computers and for updates required for installation. Updates found are displayed in this folder and can be installed by running the required updates installation task.

[Add/Remove columns](#)
[Refresh](#)

You need to accept License agreements for updates

Filter setup | Search:

Source: | Installation is required: | Update approved:

Name	Description	Source	Type
Windows Internet Explorer 9 for ...	Windows Internet Explorer 9 deliver...	Microsoft	Application
Windows Internet Explorer 9 for ...	Windows Internet Explorer 9 deliver...	Microsoft	Application
Windows 7 Service Pack 1 for x64...	Windows 7 Service Pack 1 is a recom...	Microsoft	Application
Internet Explorer 10 for Windows ...	Internet Explorer 10 is fast and fluid...	Microsoft	Application
Internet Explorer 10 for Windows ...	Internet Explorer 10 is fast and fluid...	Microsoft	Application
Update for Windows 7 for x64-ba...	Install this update to resolve issues i...	Microsoft	Application
Update for Windows 7 for x64-ba...	Install this update to resolve issues i...	Microsoft	Application
Update for Windows Server 2008 ...	Install this update to resolve issues i...	Microsoft	Application
Update for Windows Server 2008 ...	Install this update to resolve issues i...	Microsoft	Application
Update for Windows Server 2008 ...	Install this update to resolve issues i...	Microsoft	Application

Windows Internet Explorer 9 for Win
Windows Internet Explorer 9 delivers web s that look and perform like native PC applica power of Windows. Fast: Internet Explorer Designed to take full advantage of your PC Windows, Internet Explorer 9 delivers grap immersive experiences that are as fast and applications installed on your PC. Clean: In the focus on the Web sites you love with a increased viewing area that makes your Wi Intuitive and seamless integration with Win click access to Web applications pinned dire Trusted: Internet Explorer is the trusted w because it has a robust set of built-in secur reliability technologies that keep you safer

Here you can right click on a patch and immediately install that patch, view the properties of the patch, determine impact scale and finally, determine which vulnerabilities this patch will address)

REPORTING

Designed as a default report built-in alongside the Kaspersky Security Center, the **Software updates report** gives an administrator an overview of the vulnerability status of their environment.

To navigate to this report, first expand the **Reports and notifications** node in the left hand navigation pane area. Towards the bottom of the expanded node, click on **Software updates report**

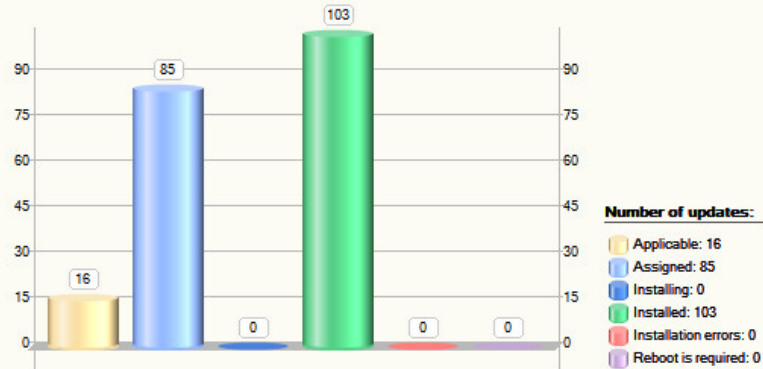
- Kaspersky Security Center
- Administration Server CS-KSC
 - Managed computers
 - Administration Server tasks
 - Tasks for specific computers
 - User accounts
 - Reports and notifications
 - Events
 - Computer selections
 - Policy selections
 - Task selections
 - Applications registry report
 - Database usage report
 - Errors report
 - Incompatible applications rep
 - Kaspersky Lab software versi
 - Key usage report
 - Most infected computers repc
 - Protection deployment report
 - Protection status report
 - Report on blocked runs
 - Report on Device Control eve
 - Report on hardware registry
 - Report on key usage by virtu
 - Report on users of the compu
 - Software updates report**
 - Users of infected computers r
 - Viruses report
 - Vulnerabilities report
 - Web Control report
 - Application management
 - Remote installation
 - Data encryption and protection
 - Mobile Device Management
 - Unassigned devices
 - Repositories

Kaspersky Security Center

Software updates report

Software updates installation statistics report for all groups

Period: from Saturday, October 17, 2015 to Monday, November 16, 2015



Summary:

Status	Updates	Computers	Windows Updates	Third-party updates	Fixing critical vulnerabilities	Fixing important vulnerabilities	Fixing less important vulnerabilities
Applicable	16	2	16	0	0	0	0
Assigned	85	2	85	0	0	0	0
Installing	0	0	0	0	0	0	0
Installed	103	2	103	0	0	0	0
Failure	0	0	0	0	0	0	0
Restart is required	0	0	0	0	0	0	0
Applicable (new version)	0	0	0	0	0	0	0

Updates: 204 Applicable: 16 Assigned: 85 Installing: 0 Installed: 103 Ir