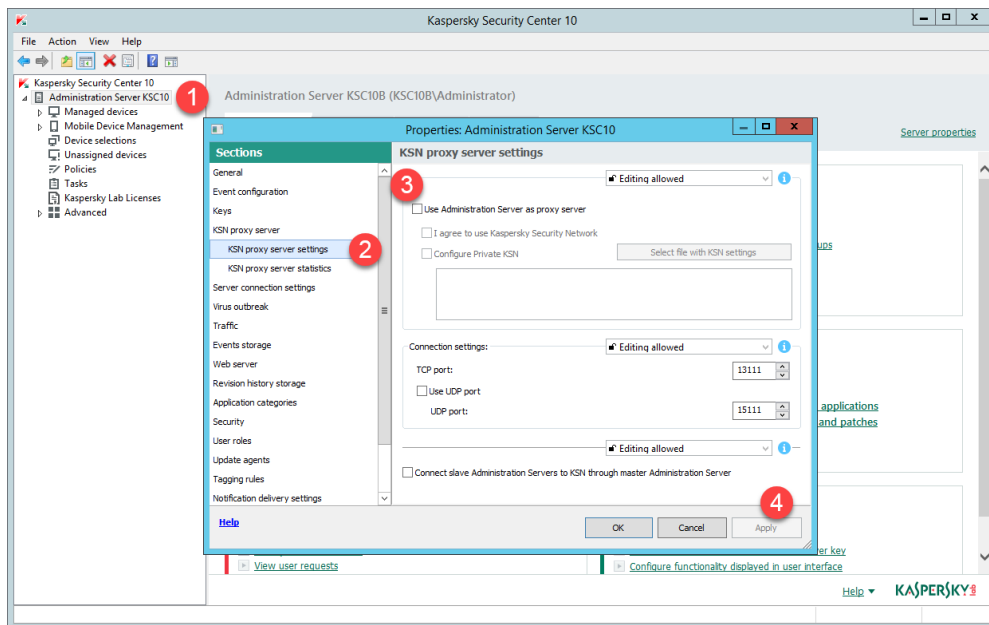
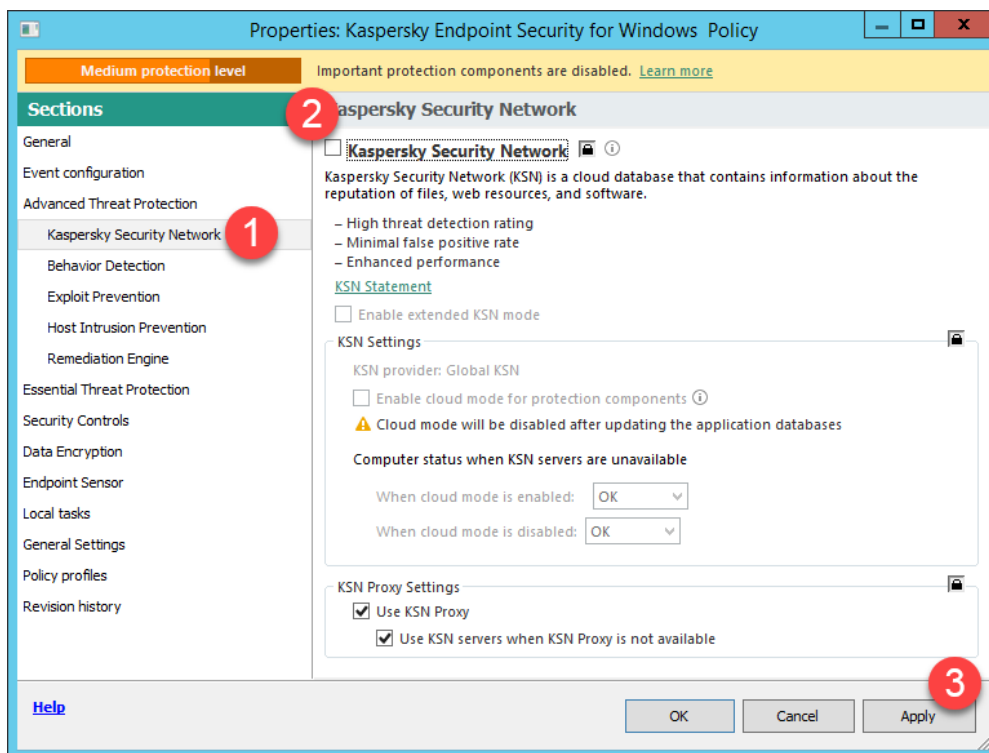


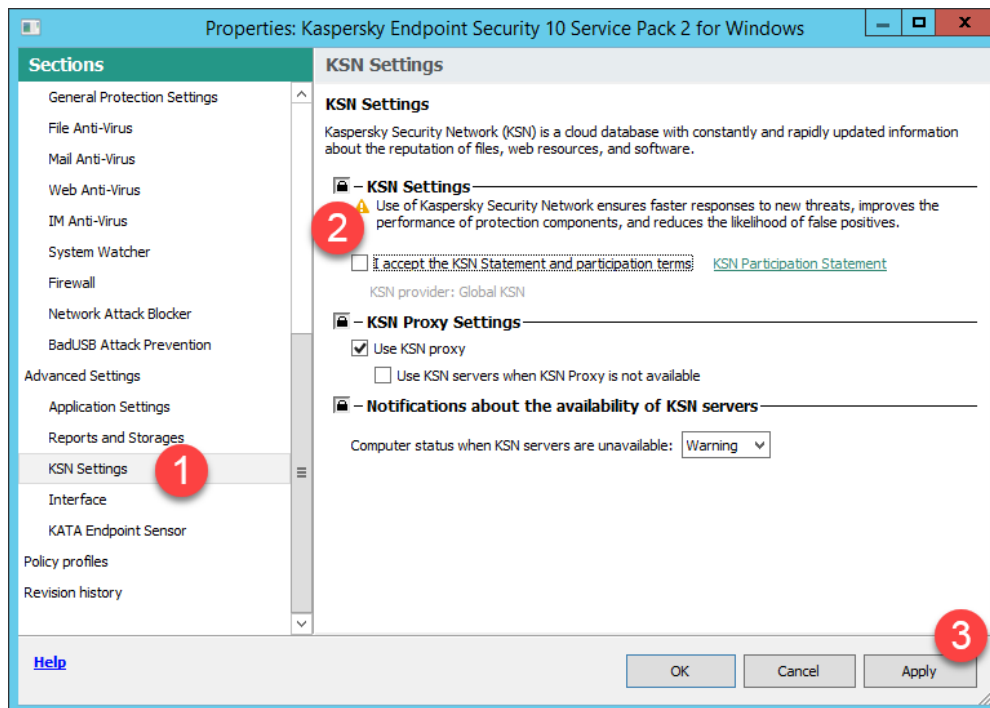
Kaspersky Security Center 10 KSN proxy settings



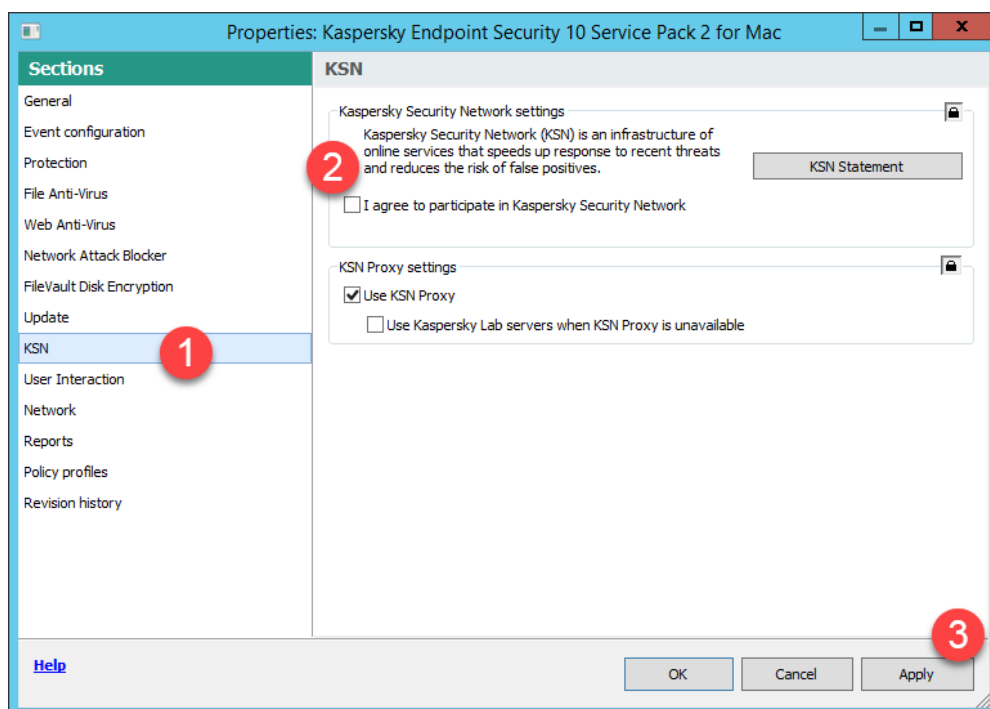
Kaspersky Endpoint Security 11 for Windows



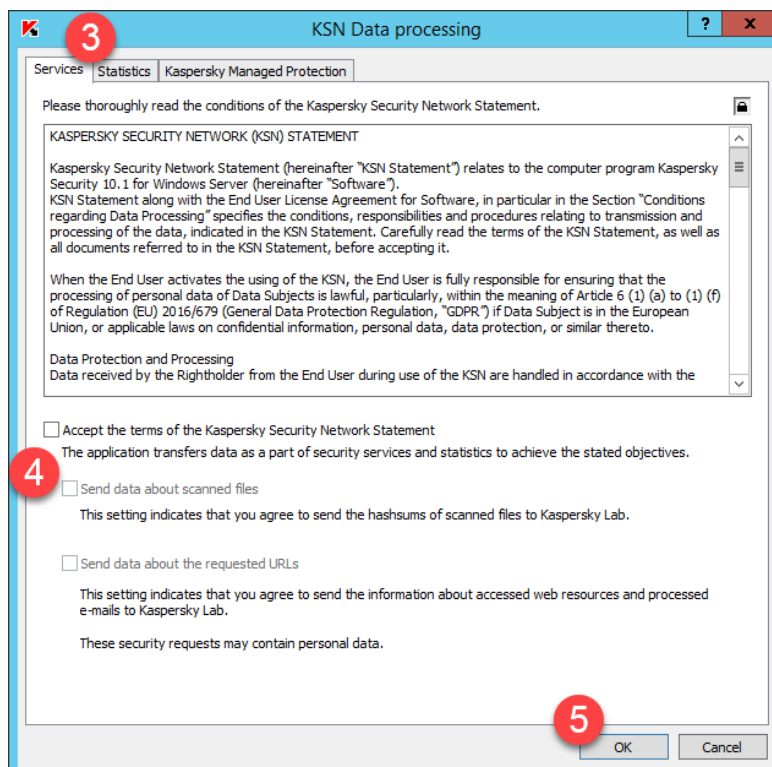
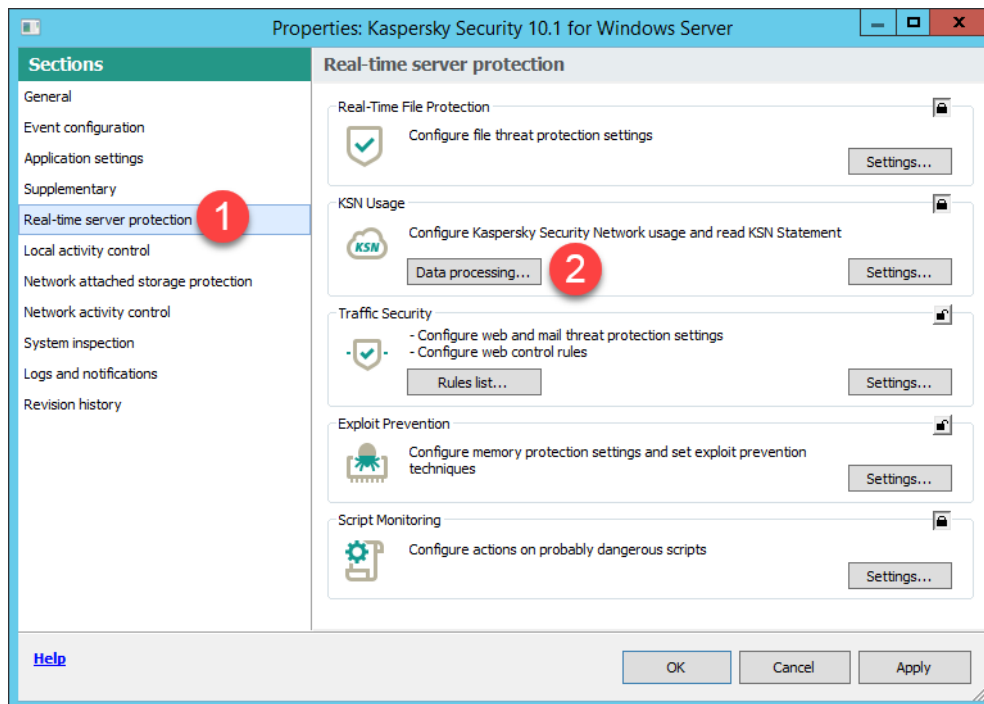
Kaspersky Endpoint Security 10 for Windows



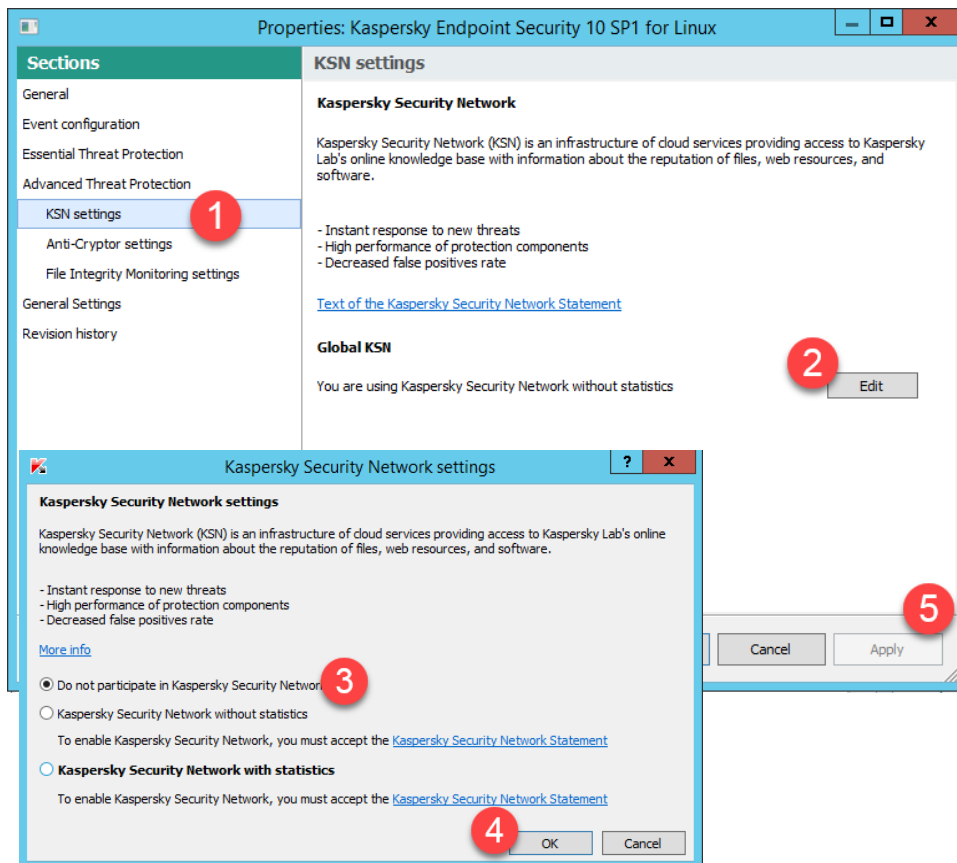
Kaspersky Endpoint Security 10 Service Pack 2 for Mac



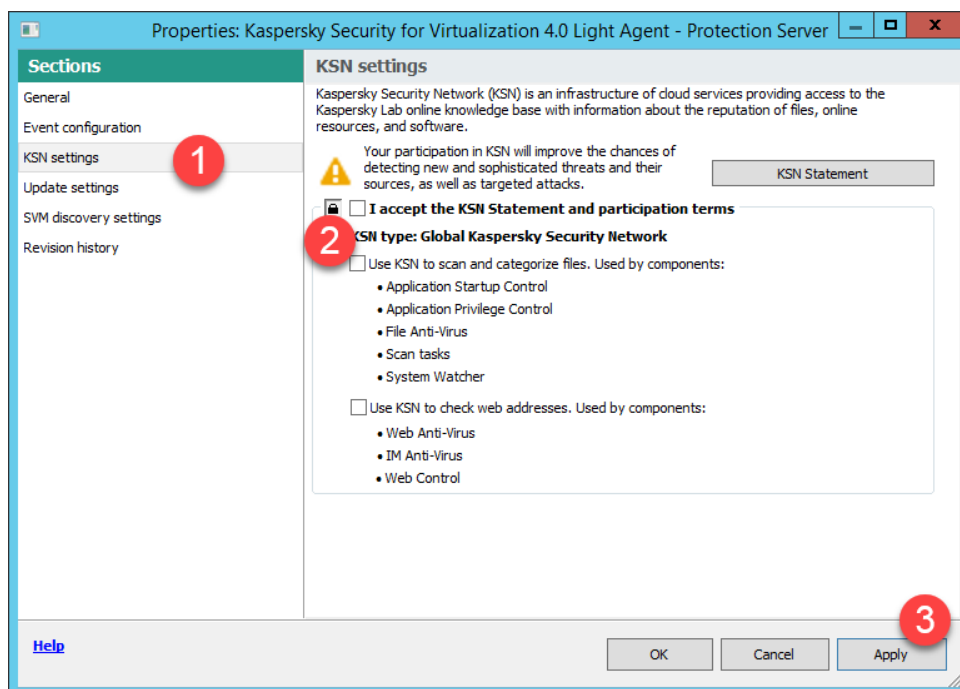
Kaspersky Security 10.1 for Windows Server



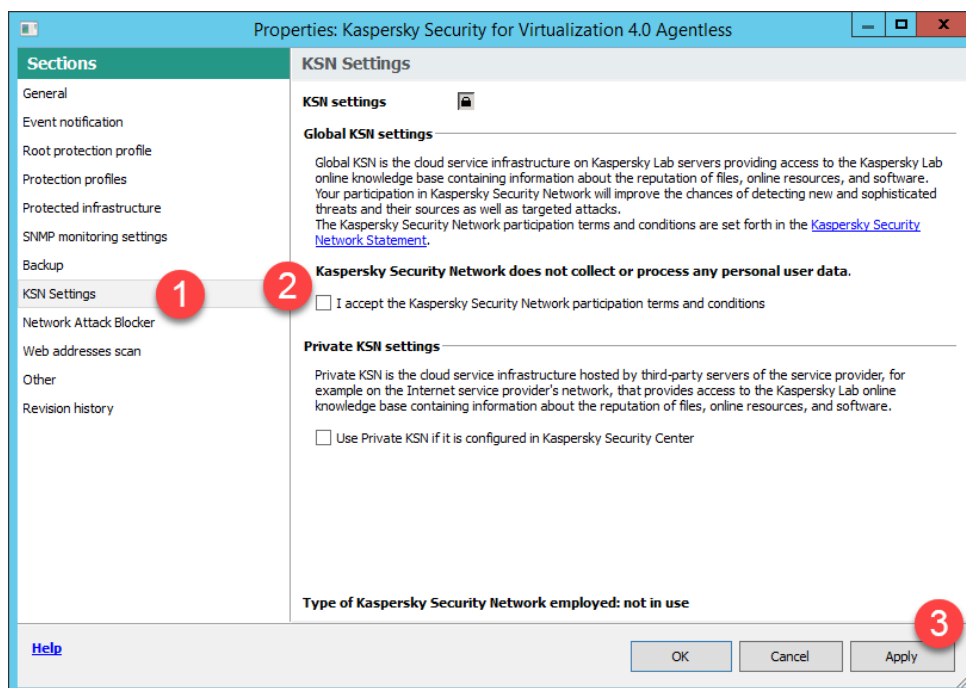
Kaspersky Endpoint Security 10 for Linux



Kaspersky Security for Virtualization 4.0 | Light Agent



Kaspersky Security for Virtualization 4.0 | Agentless



Kaspersky Endpoint Security Cloud

Kaspersky Endpoint Security Cloud
bas.van.ek@kaspersky.nl

Information panel
Users
Devices
Security profiles
Quarantine
Distribution packages
Settings 1

General settings of Kaspersky Endpoint Security Cloud

Update the security application for Windows devices
Configure the settings for updating the security application for Windows devices [Settings...](#)

Event notifications
To receive email messages with event notifications, specify an email address and select the events you need to be notified of. [Settings...](#)

Anti-virus database update settings
Configure the anti-virus database update mode and settings. [Settings...](#)

Virus scan settings
Configure the virus scan mode and settings. [Settings...](#)

Usage of Kaspersky Security Network
Kaspersky Security Network (KSN) allows you to detect malware before they are run, thus saving resources of computers and mobile devices. Use of KSN is only possible if there is a constant Internet connection.

2 ☐ Use of Kaspersky Security Network disabled

3 [Save](#) [Cancel](#)

[Privacy Policy](#)
[Legal Notice](#)
[Help](#)
[Support](#)

© 2018 AO Kaspersky Lab. All Rights Reserved.
build 6.0.0.252

Kaspersky Security 9.0 for SharePoint Server

Kaspersky Security 9.0 for SharePoint Server

Control Center (localhost)
On-access scan
On-demand scan
Content filtering
Backup
Updates
Notifications
Reports
Settings 1
Licensing
Data Leak Prevention

Settings 3 [Save](#) [Cancel](#)

Use of Kaspersky Security Network

[KSN Participation Agreement](#)

☒ I have read the KSN Statement and accept all of the conditions therein 2
☐ Use Kaspersky Security Network
KSN uses a cloud computing technology that provides up-to-date information about the latest threats and malware before they are included in the anti-virus databases.
Maximum waiting time when requesting KSN: 5 sec.
☐ Use proxy server to access KSN
Proxy server settings can be defined in the Updates node.

Data Leak Prevention

☒ Enable DLP Module
Allow running search tasks on the following servers:
☐ SP

Diagnostics

Logs folder: [Default](#)
Log storage period: 14 day(s)
Log details
[Settings...](#) [Reset](#) Detail level: **Minimum**
Only main events in the application operation will be logged.

Kaspersky Security 9.0 for Microsoft Exchange Servers

Server protection

1. **Server protection** (selected in the left sidebar)

2. **Advanced Anti-Virus settings** (selected tab)

3. ☐ Use Kaspersky Security Network (KSN) Maximum waiting time when requesting KSN: 5 sec.

4. **Save** button

5. **Settings** (selected in the left sidebar)

6. ☒ Do not use Kaspersky Lab services

7. **Save** button

Diagnostics

Log storage period: 14 day(s)

Log details

Settings... Reset Detail level: **Minimum**
Only main events in the application operation will be logged.

Proxy server settings

Proxy server address: Port: 8080

☐ Use authentication

Account: Password:

☐ Use a proxy server to access KSN, Enforced Anti-Spam Updates Service, and Kaspersky Lab activation servers

KSN Settings

This operation applies to all servers covered by the profile

☒ Do not use Kaspersky Lab services

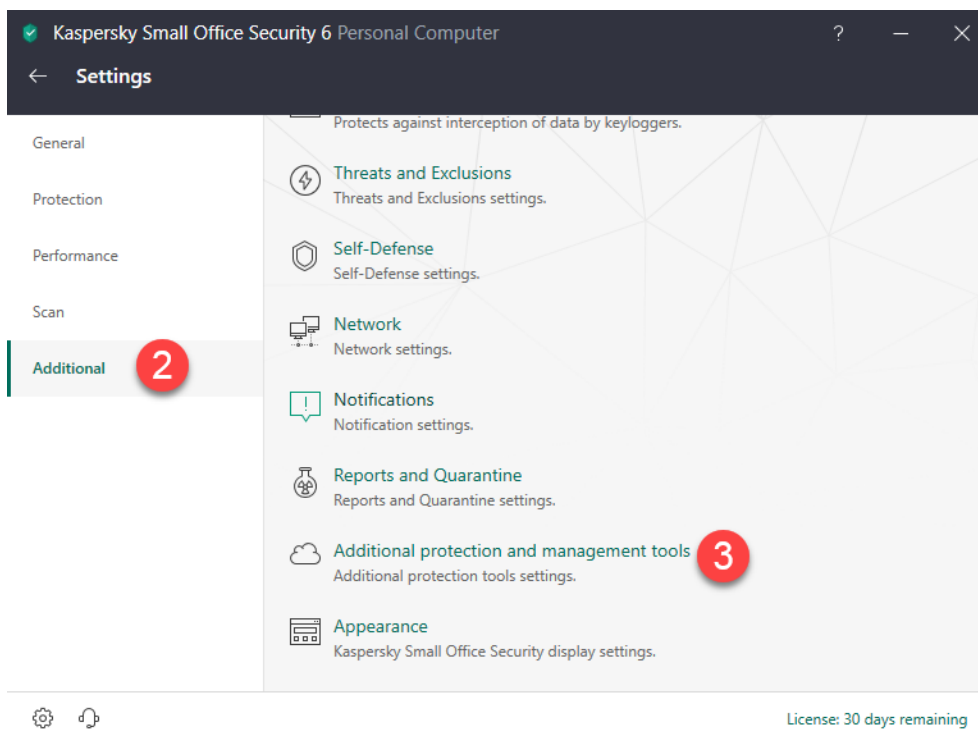
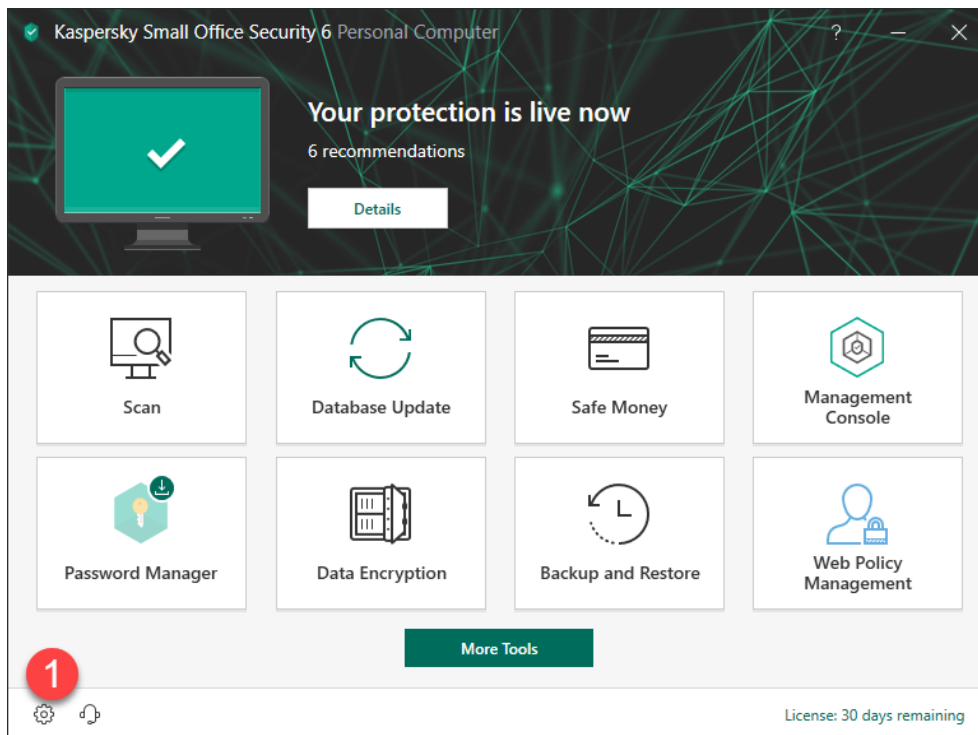
☐ I accept [KSN Participation Agreement](#). Use Kaspersky Security Network

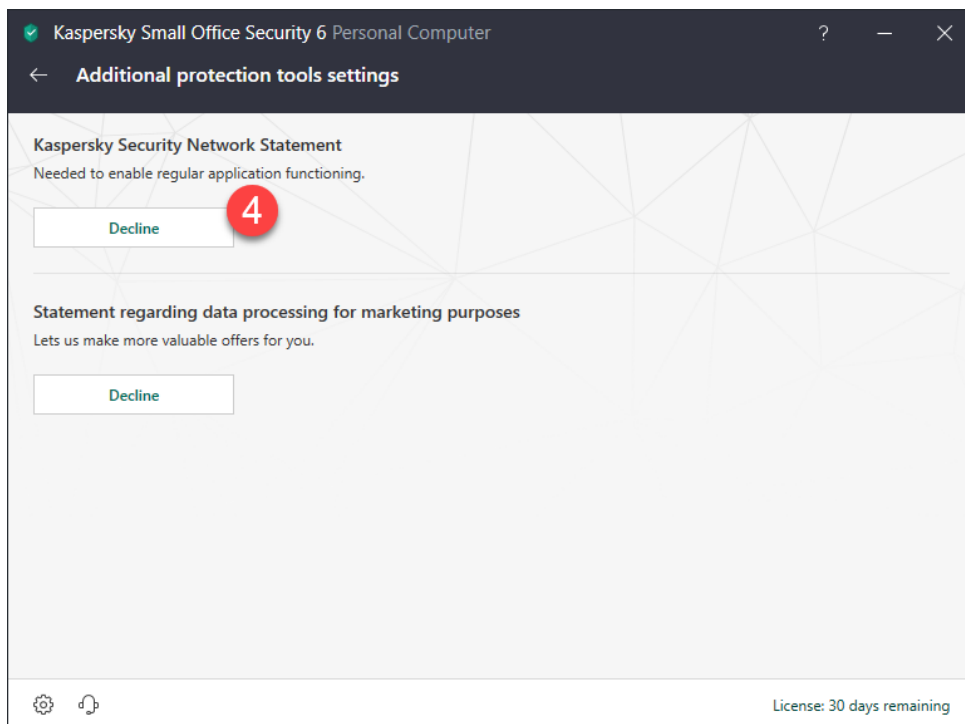
☐ Use Kaspersky Private Security Network (KPSN)
[More about KPSN](#)

KPSN: Not configured

KPSN configuration **Import...**

Kaspersky Small Office Security





Kaspersky Total Security, Kaspersky Internet Security en Kaspersky Anti-Virus

